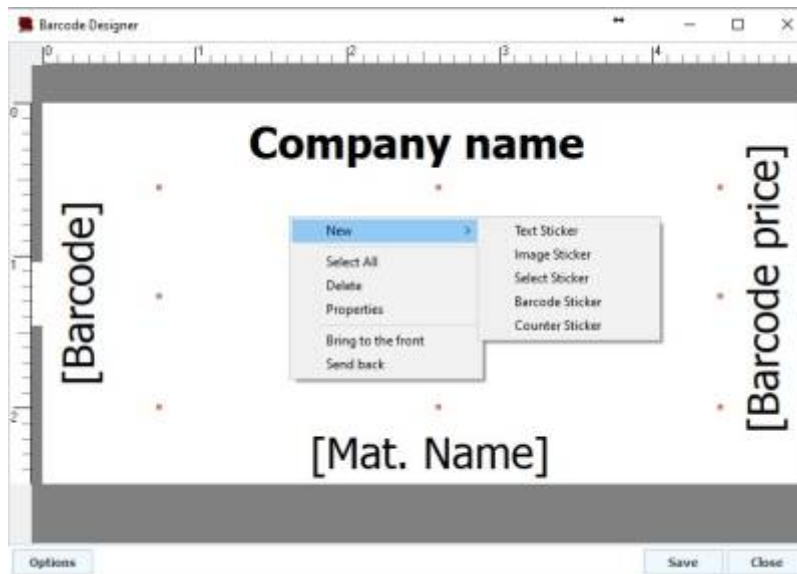
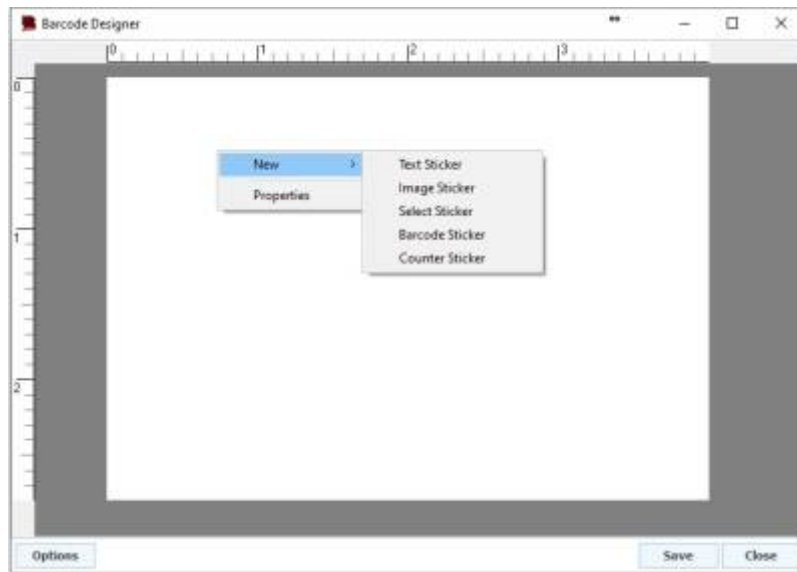


Barcode Label Designer

Workspace for designing a barcode label

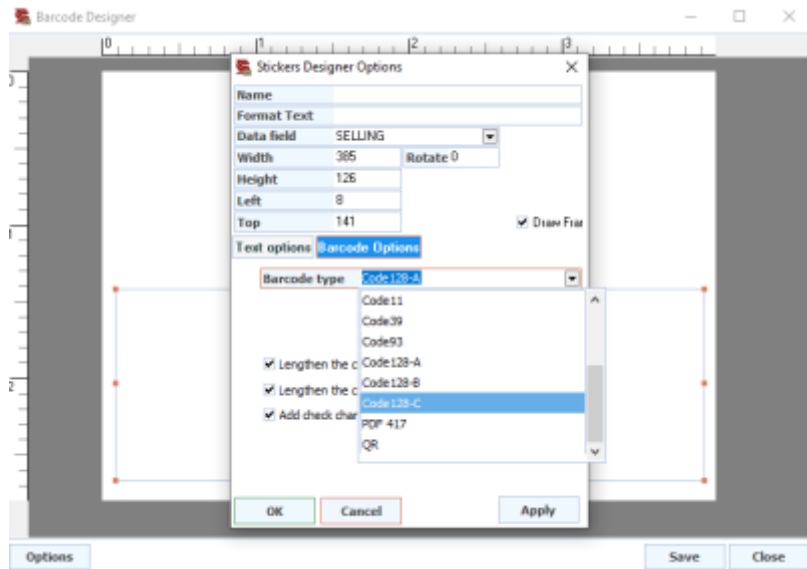


Text Label - Select the data field to display the required text

Photo Sticker - In case you want to print an image with a barcode

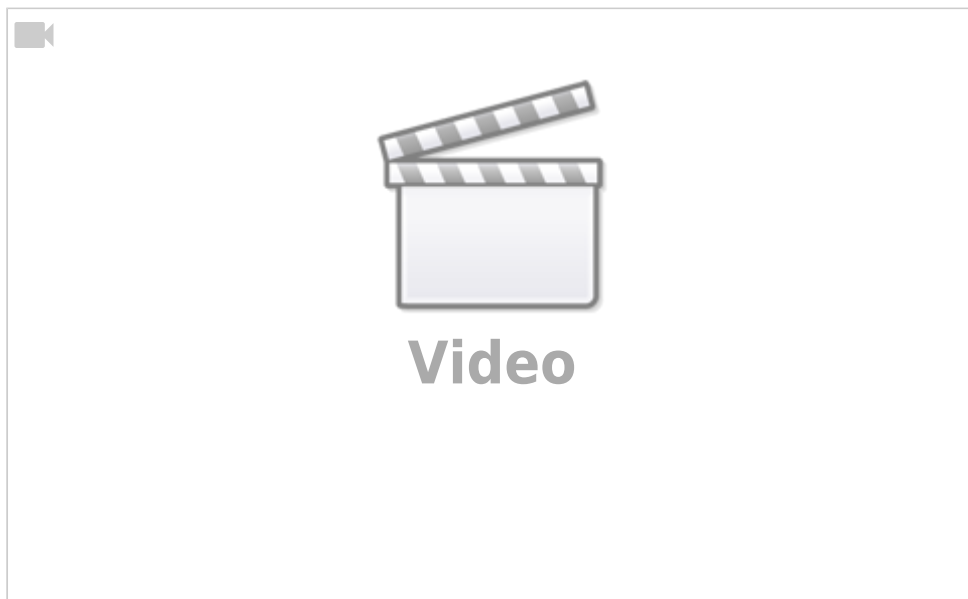
Check Label - In case you want to add a checkbox to the label

Barcode Label - We choose from the data field the field to be printed as a barcode and from the .barcode options we choose the required barcode type, density, and other settings



Counter Label - To place a counter on the number of printed labels

Visual Explanation



From:
CS ERP Wiki - ويكي الحلول المبتكرة - [/https://wiki.cserps.com](https://wiki.cserps.com)

Permanent link:
<https://wiki.cserps.com/en/help/barcodedesigningform>

Last update: **2021/04/23 03:11**