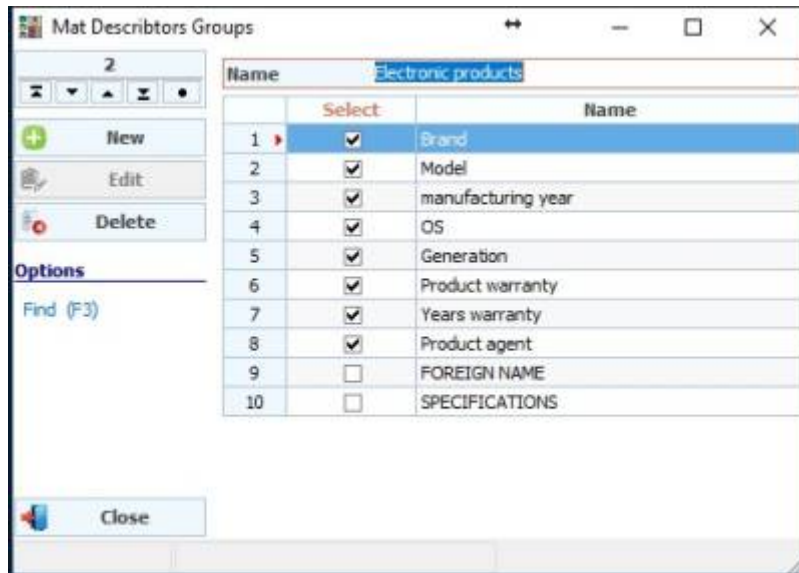


Mat Descriptors Groups

The work of this card is to create a set of descriptors in order to assign this group to the material card through the table of material descriptors group.

To access material descriptor groups through

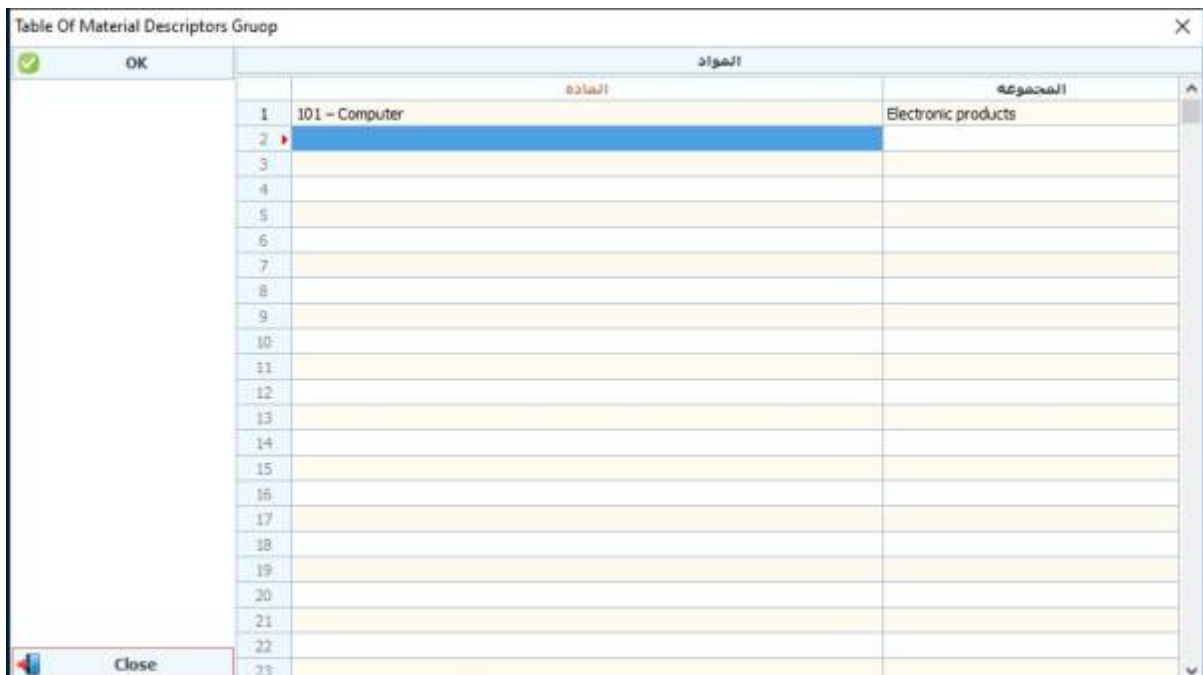
Stock - Cards - Material Descriptors Groups



To create a descriptors group

New and record the name of the group with specifying the descriptors for this group, then we click on save

After creating the groups, we go to Table Of Material Descriptors Group, and through the table, a group of descriptors can be assigned to each of the materials folders





From:
CS ERP Wiki - ويكي الحلول المبتكرة - /https://wiki.cserps.com

Permanent link:
<https://wiki.cserps.com/en/help/matdscgroupscard>

Last update: **2021/04/23 03:10**