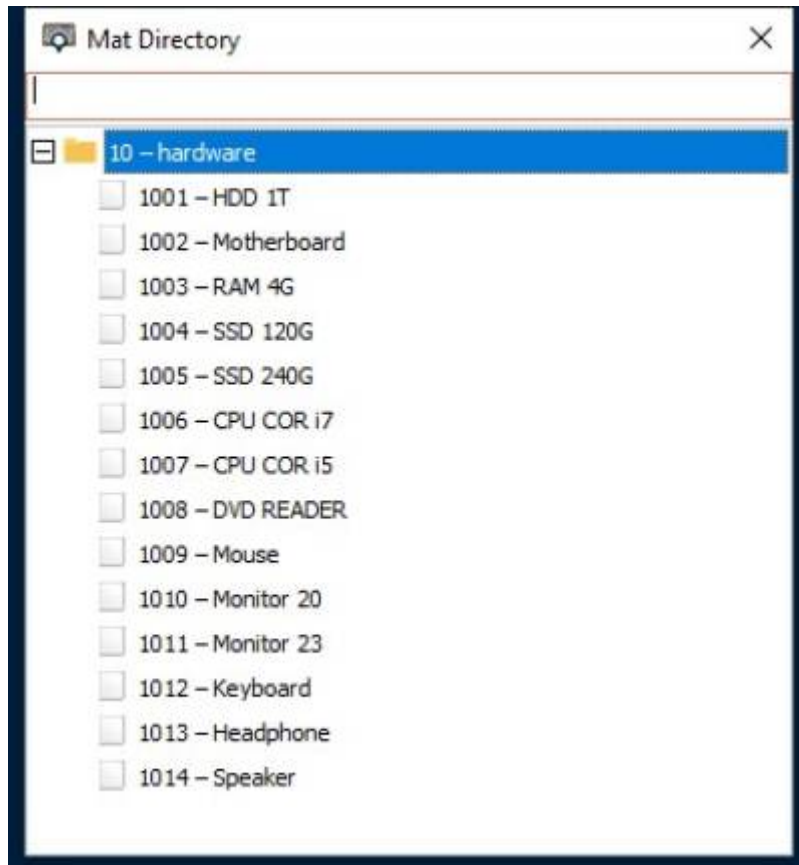


## Material Directory

To display the material tree that has been added from a material card (displaying the folder and items (inside this folder

### To access the materials directory through

Stock - Cards - Material Directory



It can be distinguished as shown in the picture, a color that is present next to each material, which is

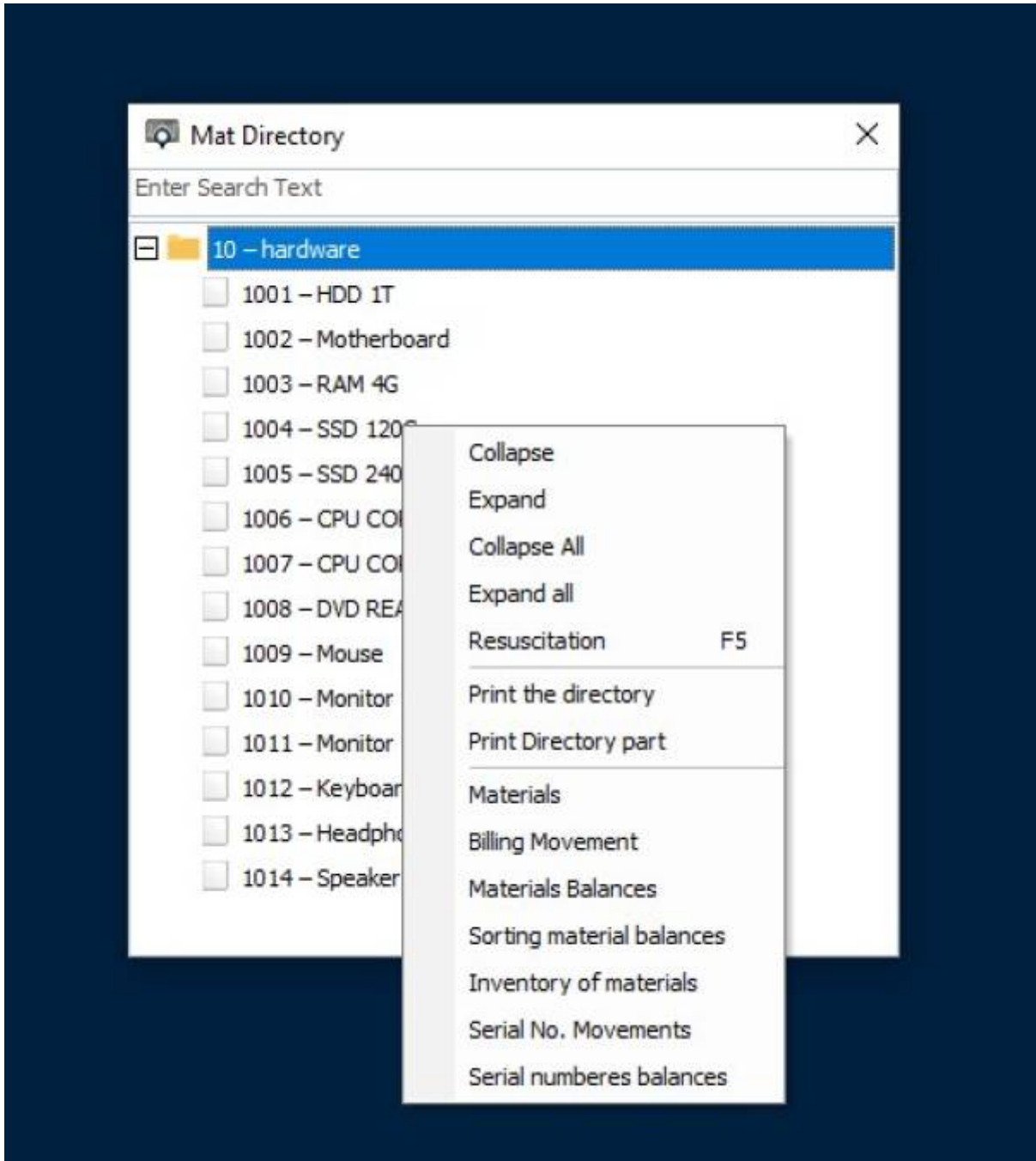
**Green** : It means that there is a quantity of this substance inside the warehouse

**Silver** : It means that the quantity of this material in the warehouse is zero

**Red** : That is, this material has a negative quantity (this material was sold and the quantity was greater than the actual balance

**White** : That is, there is no movement on this material

Also, inventory reports can be reviewed by selecting any material, right-clicking, and selecting one of the reports within the selection list



From: [/https://wiki.cserps.com](https://wiki.cserps.com) - ويكي الحلول المبتكرة - CS ERP Wiki

Permanent link: <https://wiki.cserps.com/en/help/mattree>

Last update: 2021/04/23 03:09