

Cell properties

The cells in the design of reports in the innovative solutions program are divided into three types

Text cell - digital cell - equation cell

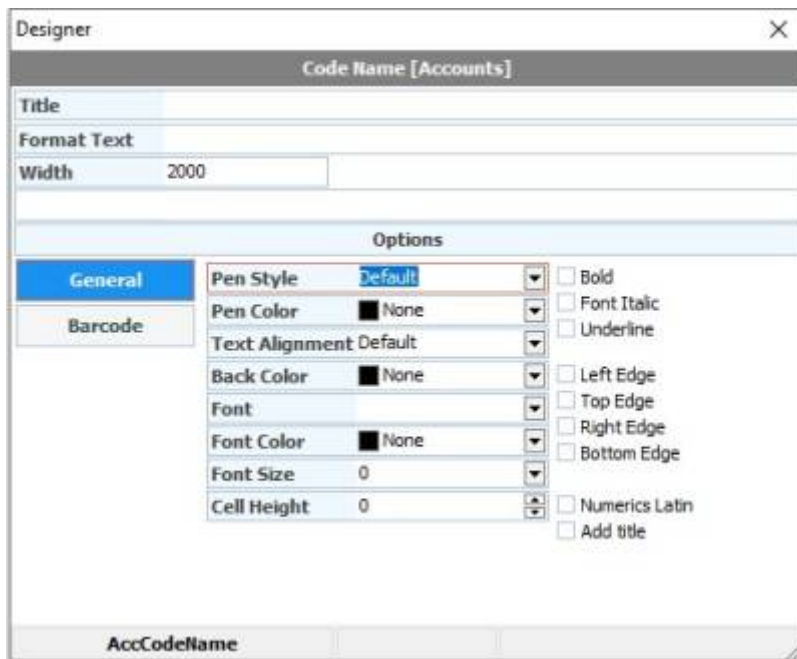
Title: Type the name of the cell

Format text: To add custom formatting to the cell with custom labels for more clarity, we use the following example: If we add an account name and want to put it after it, Respected people, we write "Gentlemen: / # Respected." In the formatting text, it will appear to us in the report **Gentlemen: / .“The account name from the database” Respected**

Width: the width of the cell

Programmatic Name: To assign a programming name to the cell in case we want to design the report [\[in Lua](#)

General Tab



Cell boundaries: Determines the type of boundary for the cell

Stroke color: Assign the border color to this cell

Writing direction: to specify the direction of writing to the right, left, or center

Background color: To assign a color to the cell background

Font: to define the font type

Font color: Assigns the font color to a cell

Font size: Define the font size for the cell

Cell height: Determines the height of the cell

Bold: Make the font bold

Italic: To make the font italic

Underscore: to add a line under the texts

Left border: Adds the left border of the cell

Upper bound: Adds the upper bound to the cell

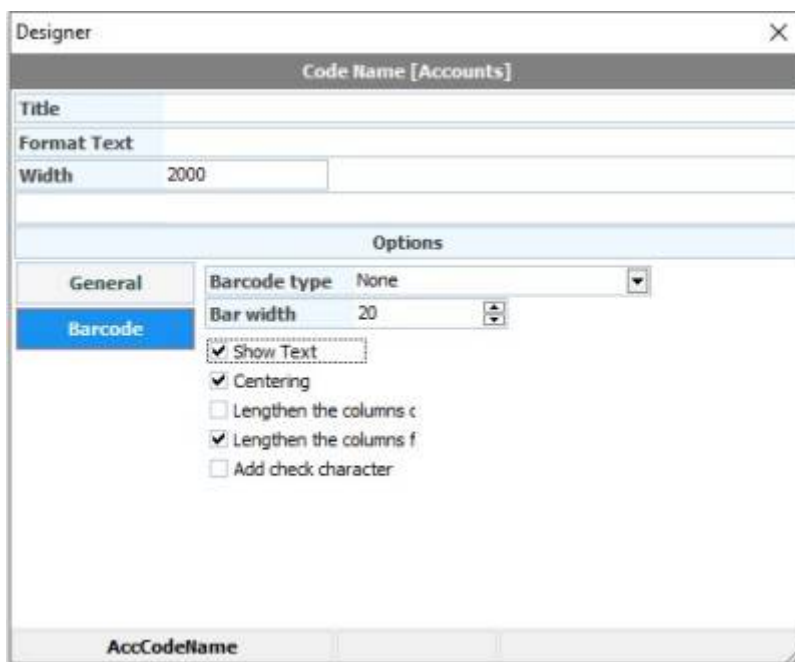
Right border: Adds the right border of the cell

Bottom border: Adds the bottom border of the cell

Latin numbers: to force the numbers to appear in Latin, regardless of the regional options of the .operating system

.Add title: to add the cell name before the code value

Barcode tab



Barcode type: to choose the type of barcode

Bar width: Determines the barcode density

Show text: to show the text of the barcode

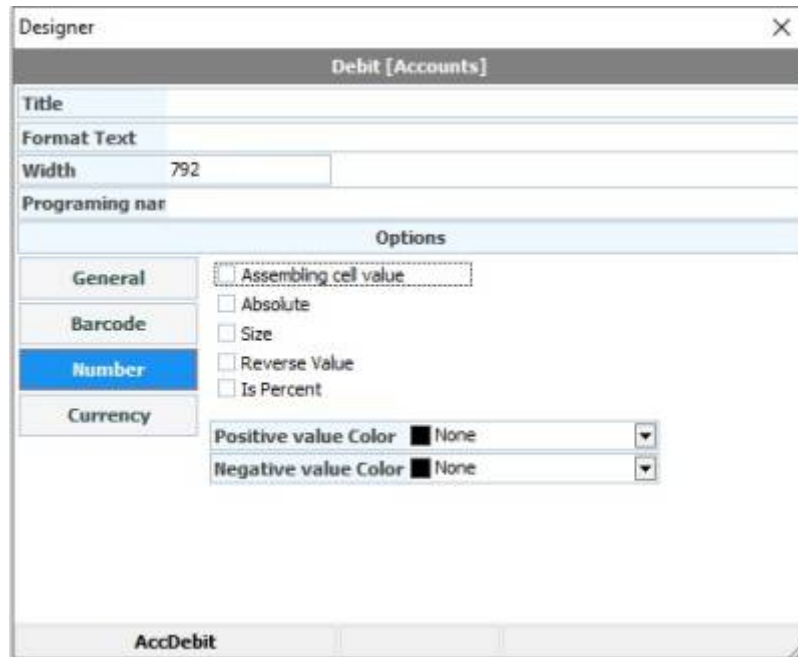
Centering: to make the barcode in the middle

Lengthening the columns from the top: To lengthen the columns of the barcode lines upwards

Adding columns from the bottom: To lengthen the columns of barcode lines down

Add verification characters: to add the start and end lines of the barcode for verification

.Tab No



Group cell value: to group the cell value and add it to the totals below the detail

.Absolute: To always show the number cell value in absolute value

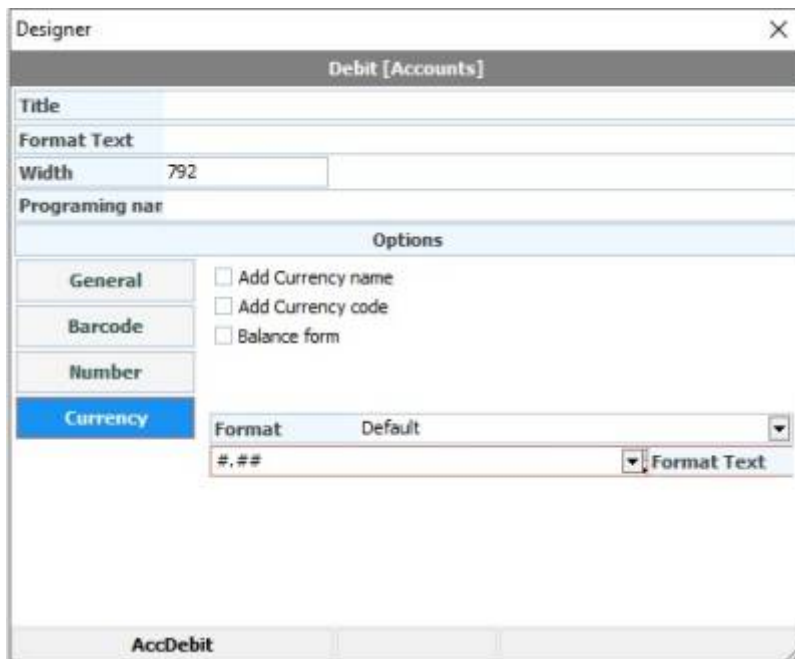
:Size

Invert value: to invert the value of the number cell, if it is positive, it will become negative or vice versa.

.Positive value color: to assign a specific color in case the result in the cell is positive

Negative value color: Assigns a specific color in case the result is negative. For example, we want to distinguish debit balances from credit balances in the report by coloring the value

Currency Tab



Add currency name: to add the name of the currency used in the cell

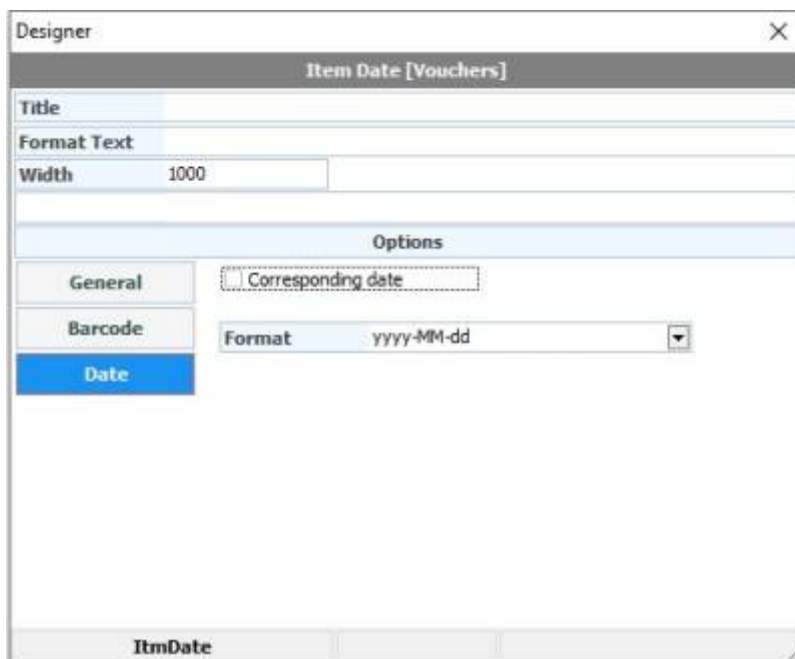
Add currency symbol: to add the currency symbol used in the cell

.Balance package: add the phrase debit or credit balance next to the currency

Format: to choose a sample value display format. Currency, amount or money format found in [admin .options](#) or other formats such as drop the number for example and write it as text instead of numbers

Format Text: Specifies the cell's formatting type

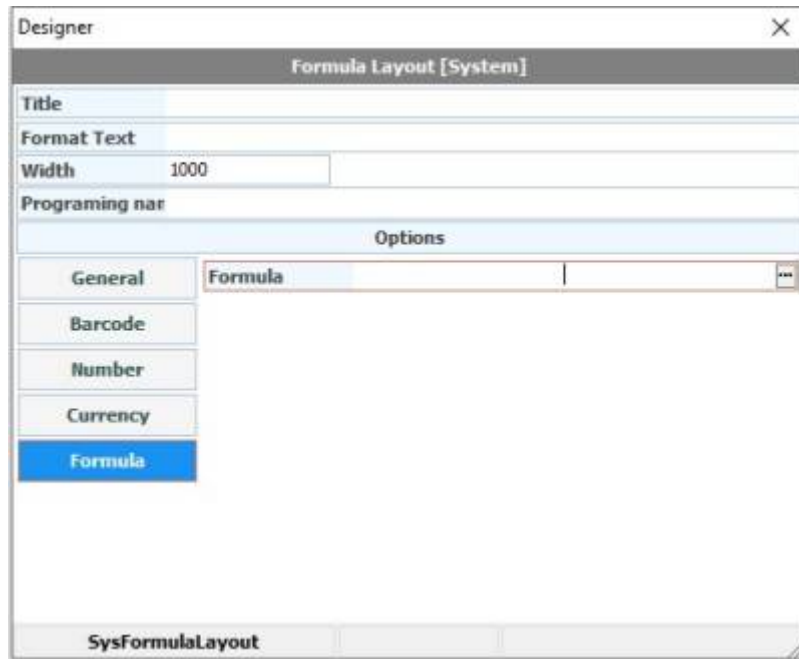
History tab



Corresponding date: to show the corresponding date in Hijri or Gregorian according to the default .date in the program

Format: to choose the date or time format

**** Equation tab ****



To add [custom equation](#)



From: [/https://wiki.cserps.com](https://wiki.cserps.com) - ويكي الحلول المبتكرة - CS ERP Wiki

Permanent link: <https://wiki.cserps.com/en/help/pmrcellpropsform>

Last update: 2021/04/23 03:09